

SUL 181 d

ENGLISH

ANSCHLUSS/MONTAGE

⚠️ WARNUNG

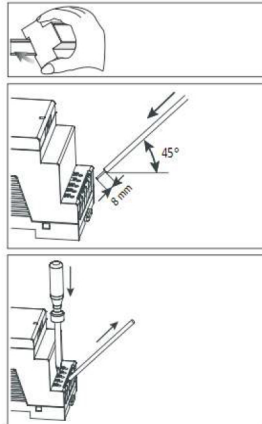


Lebensgefahr durch elektrischen Schlag!

- Montage ausschließlich durch Elektrofachkraft!
- Spannung freischalten!
- Benachbarte, unter Spannung stehende Teile abdecken oder abschränken.
- Gegen Wiedereinschalten sichern!
- Spannungsfreiheit prüfen!
- Erden und kurzschließen!

nur bei SUL 181 d

- Quarzwerk startet bei angelegter Spannung erst nach einigen Minuten.
- Die volle Gangreserve wird nach ca. 5 Tagen erreicht.



Technical Data

SUL 181 d

- Operating voltage: 110–230 V~, 50–60 Hz
- Power consumption: max. 1 VA
- Contact: two-way switch
- Gap: <3 mm (μ)
- Contact material: Ag
- Switching capacity: 16 A, 250 V~, cos φ = 1
4 A, 250 V~, cos φ = 0,6
24 V / 100 mA AC
- Switching capacity min.: Incandescent lamp load: 1100 W
Fluorescent lamp load: parallel-corrected
2 x 40 W (4,7μF)
- Perm. ambient temperature: -20 °C ... +55 °C
- Protection class: II in acc. with EN 60730-1 for designated installation
- Protection rating: IP 20 in acc. with EN 60529
- Time accuracy: ≤ ±1 s/s day at +20 °C
- Power reserve: R 200 h (230 V), R 100 h (110 V)
- Pollution degree: 2
- Type: 1 BSTU

ENGLISH

Basic safety instructions

⚠️ WARNUNG



Danger of death through electric shock or fire!

- Installation should only be carried out by a qualified electrician!

Designated use

- The time switch can be used for lighting, ventilation, fountains, advertising hoardings etc.
- Only for use in closed, dry rooms
- Installation on DIN top hat rail (in accordance with DIN EN 60715)
- The switching of any external wire is permitted, switching of SELV is not permitted.

Disposal

Dispose of device in environmentally sound manner

Set time

e.g. 3:00 (morning)



e.g. 15:00 (afternoon)

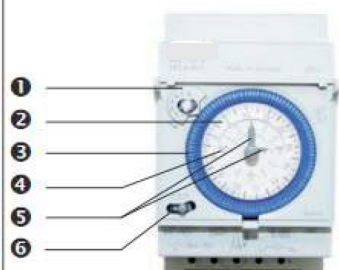


Set switching times

e.g. 6:15–10:45; 16:15–21:00 ON



Description



- 1 Switching pre-selection/manual setting
- 2 Program timing disc
- 3 Switching segments (1 = 15 mins)
- 4 Morning/afternoon (AM/PM) time display
- 5 Hand for setting time (hours and minutes) can be adjusted anti-clockwise and clockwise; turn minute hand firmly to left
- 6 Three way switch: Permanent ON – AUTO – Permanent OFF

Set manual operation/
switching pre-selection

in advance 3:00 ON (= 1)



The time switch operates the set switching times, i.e. it returns to program.

Set 1 – 0 permanent switching



Program is not operated.
1 = Permanent ON
0 = Permanent OFF

Connection, technical data see on the back side