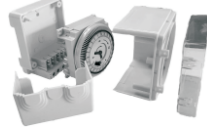


ANALOG TIME SWITCH FM/1QUARTZ INSTALLATION



BASE MOUNTING : Remove the front glass from bottom side and lift upward, unscrew the unit from the socket pull out the housing, Time Switch Module and terminal cover as shown in the exploded view from right to left. Mount the socket on the surface with the help of M4 screw(3nos.) Make the connection as per the diagrams. Reassemble all the parts from left to right and the unit is clamped with screw and front glass is fixed.

FLUSH MOUNTING

Insert the unit in the panel Cut-out from the front, Remove the front glass from bottom side and lift upward, press the (two) inbuilt plastic screws and then rotate clockwise to secure the unit.

NOTE: To remove the plug-in connection socket from the main unit unscrew from the front by inserting the screw-drive on left hand bottom hole. Now you can make the connection to the socket.

DIN RAIL MOUNTING

Break the housing from both the sides as marked. Locking clamp is not spring loaded. Pull out the locking clamp, mount the unit on 35mm symmetrical DIN RAIL & Push back the locking clamp.

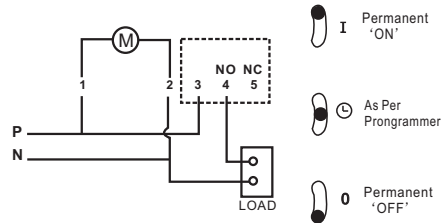
SEALING ARRANGEMENT

To avoid tampering with the set programme, the inbuilt sealing arrangement is provided. You



can seal the Time Switch as shown in the figure.

WIRING DIAGRAM & OVERRIDE SWITCH POSITION



TIME SETTING :



Turn the Switching Dial in clockwise direction until the current time (and day in case of weekly model) is almost opposite the marking arrow F & for fine adjustment turn the minute hand in the clockwise direction until the clock shows the current time.

PROGRAMMING:

Required Switch on time is set on the Switching Dial by radially pulling the corresponding black segments. Each segment on dial corresponds to 15 mins. & on weekly Dial corresponds to 2 hours.

